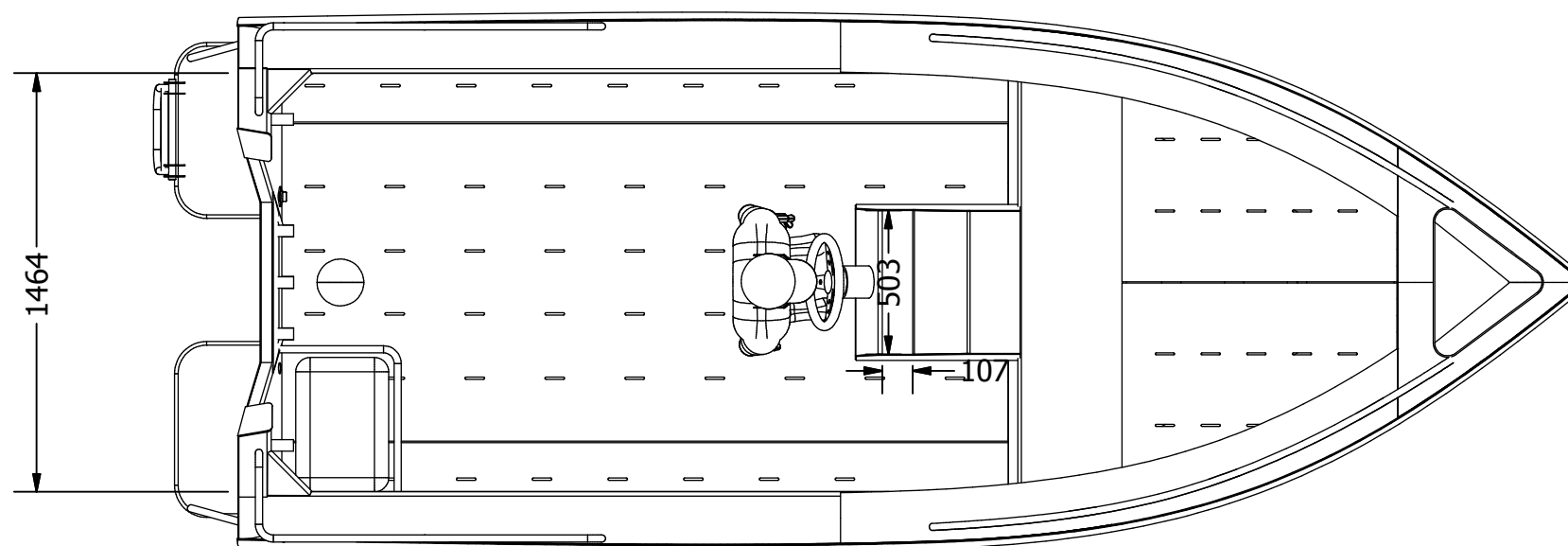
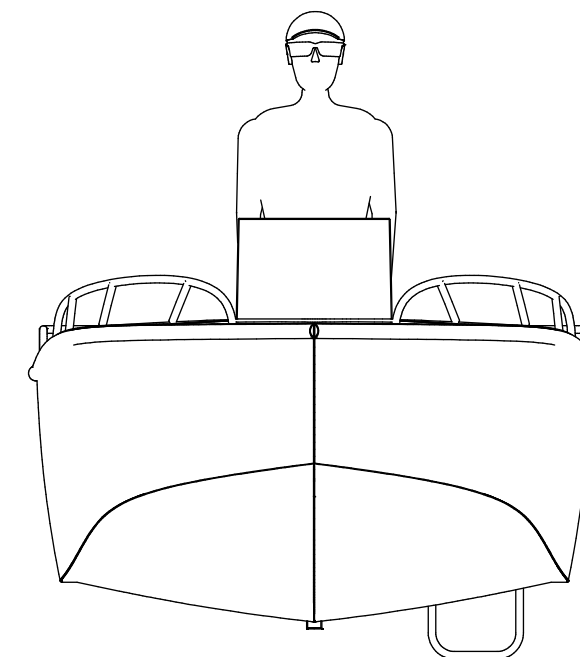
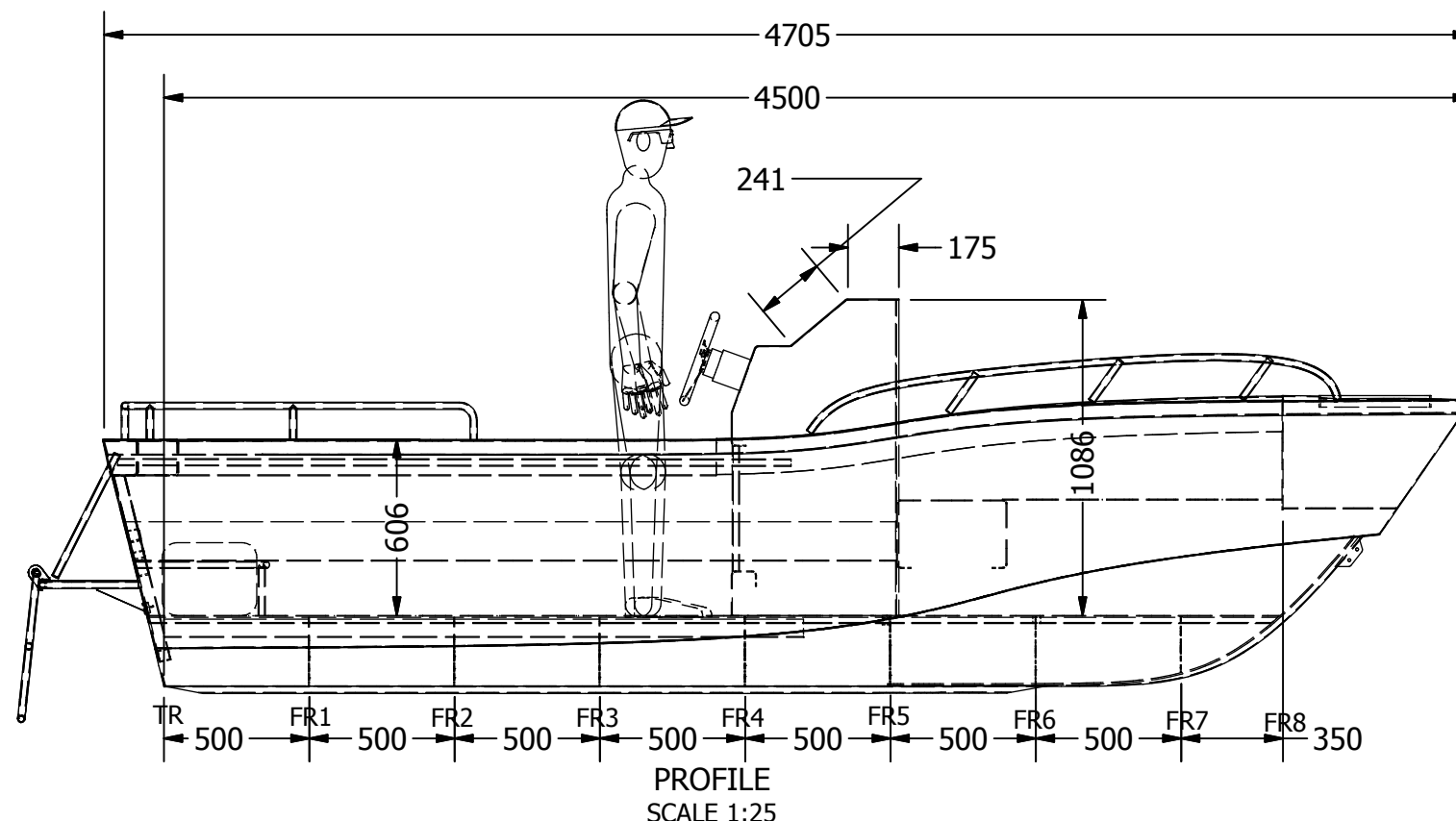
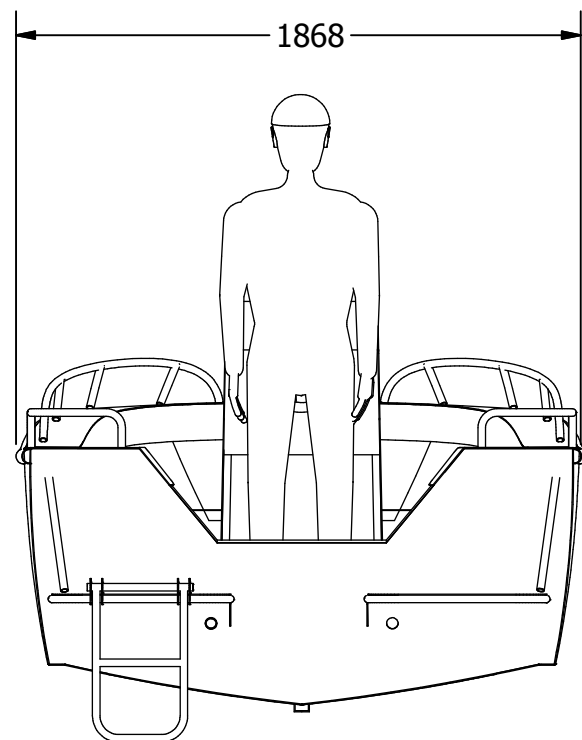


COPYRIGHT CNC MARINE.
This drawing and the data disclosed herein is not to be reproduced, copied or modified in whole or in part without express written permission from CNC Marine. ALL RIGHTS RESERVED

| CNC MARINE | | | |
|---------------|-------------|--|------------|
| PROJECT | | 4500 Centre Console | |
| DRAWING TITLE | | General Arrangement | |
| DWG NO | 4500-CC-100 | REV B | SIZE A3 |
| SHEET 1 OF 2 | | www.cncmarine.com.au cncmarine@yahoo.com.au | |



PLAN
SCALE 1:25

NOTES

1. ALL FRAME DIMENSIONS ARE FWD FACE TO FWD FACE (EXCEPT TRANSOM WHICH IS AFT TO FWD).
2. ALL FRAMES ARE FITTED AFT OF THE LINE (EXCEPT TRANSOM).
3. TRANSOM IS FITTED FWD OF THE LINE.
4. ALL PLATE TO BE MARINE GRADE 5083 H321/H116 ALUMINIUM PLATE.
5. BENDABLE EXTRUSIONS (eg HANDRAILS) TO BE 6060 T52.
6. BUOYANCY FOAM IS REQUIRED BY AS1799.
7. TRANSOM HEIGHT IS TO SUIT 21" MOTOR.

COPYRIGHT CNC MARINE.

This drawing and the data disclosed herein is not to be reproduced, copied or modified in whole or in part without express written permission from CNC Marine. ALL RIGHTS RESERVED

CNC MARINE

| | | | |
|--|--|--|------|
| PROJECT | | | |
| 4500 Centre Console | | | |
| DRAWING TITLE | | | |
| General Arrangement | | | |
| DWG NO | | | REV |
| 4500-CC-100 | | | B |
| SHEET 2 OF 2 | | | SIZE |
| | | | A3 |
| www.cncmarine.com.au cncmarine@yahoo.com.au | | | |